



## CHAPTER

# 3

## Storage Networking

**Seolito Rodriguez, MBA**

CISSP, CRISC, CISM, CISA, Pentest+, Security+, MCSA, MCT, VCP, ITIL Foundation,  
Cisco CCNA, Network+ & A+

<https://cybersecurityhoy.com>

## Storage Networking

In this chapter, you will learn about

- Storage types and technologies
- Storage access protocols
- Storage provisioning
- Storage protection

Figure 3-  
1 Three major  
storage types:  
DAS, SAN, and  
NAS

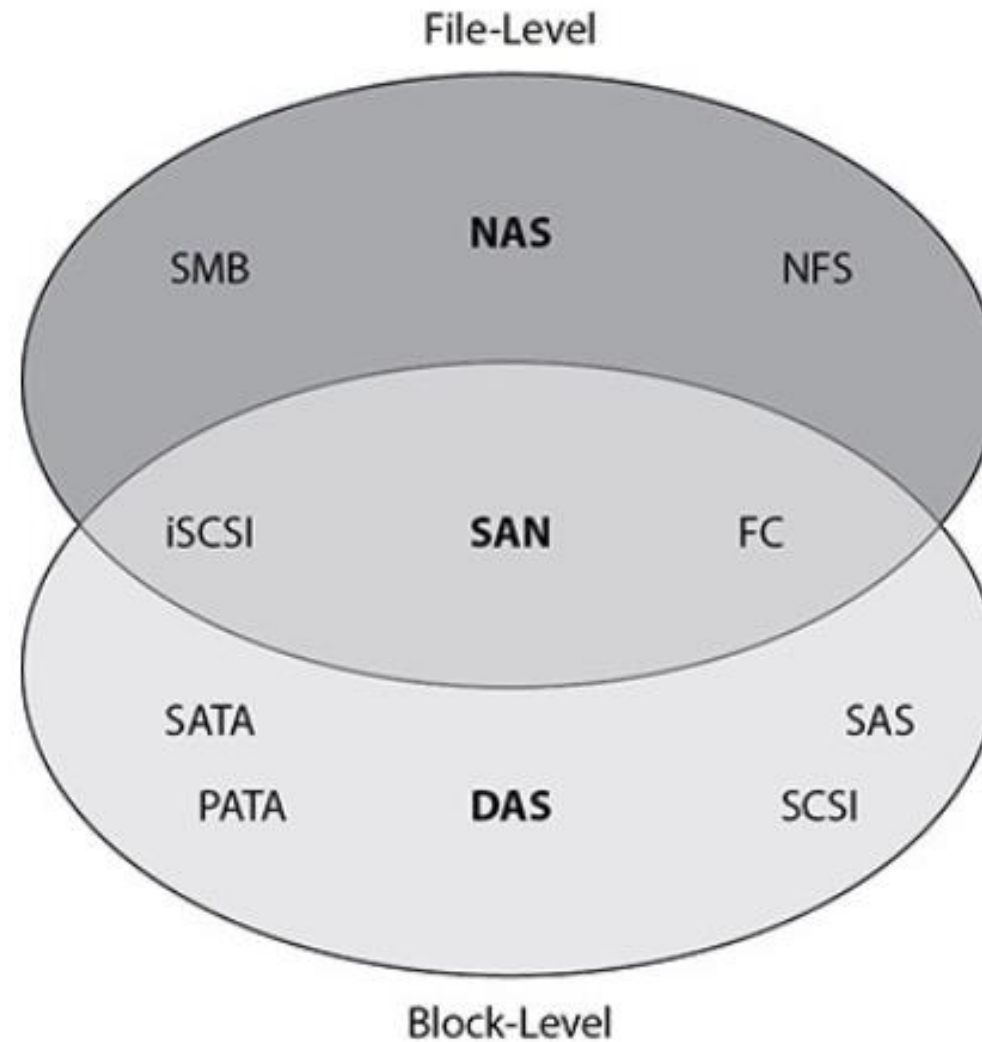


Figure 3-2 Using iSCSI over an IP network

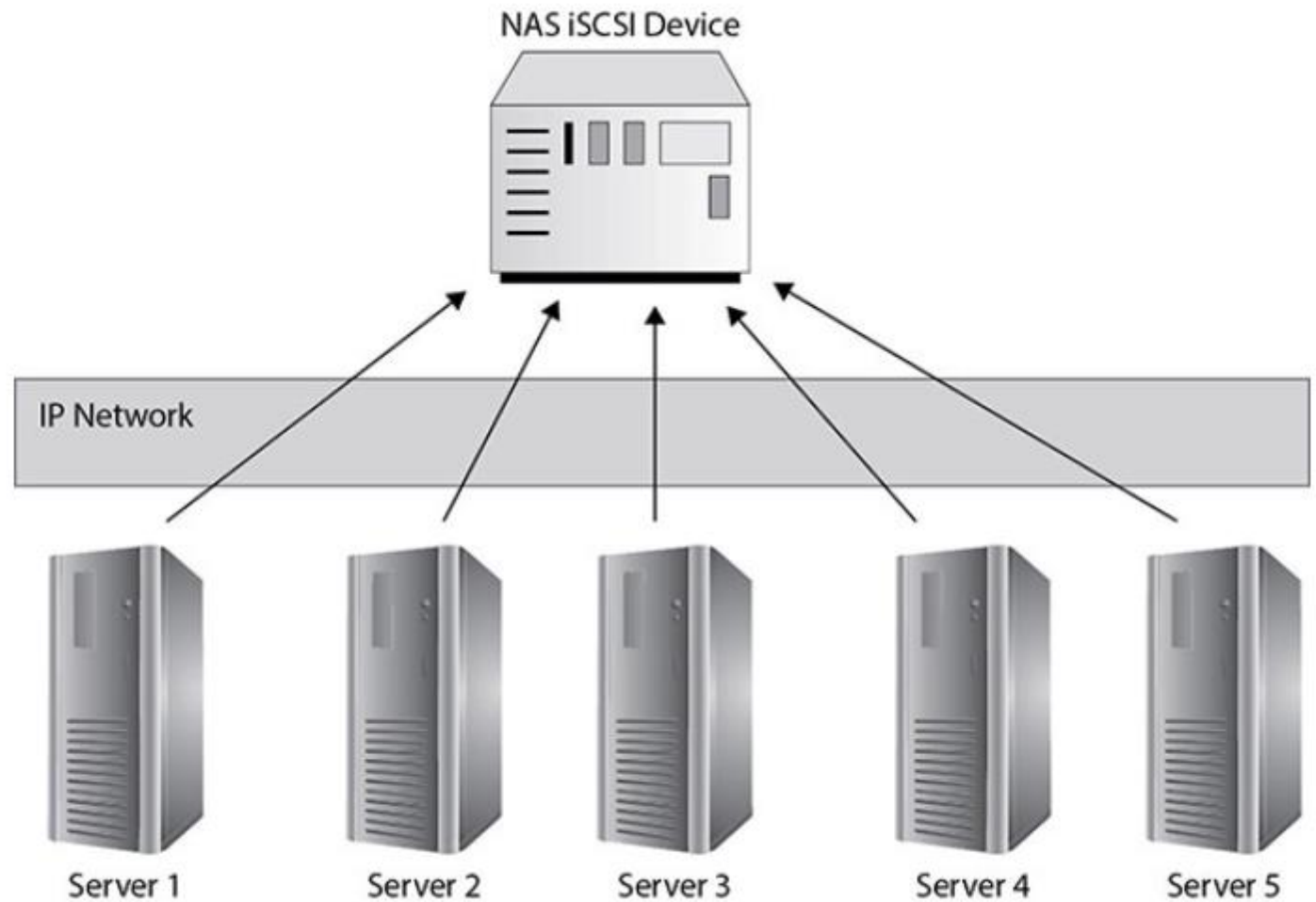


Figure 3-  
3 Tiered  
storage pool

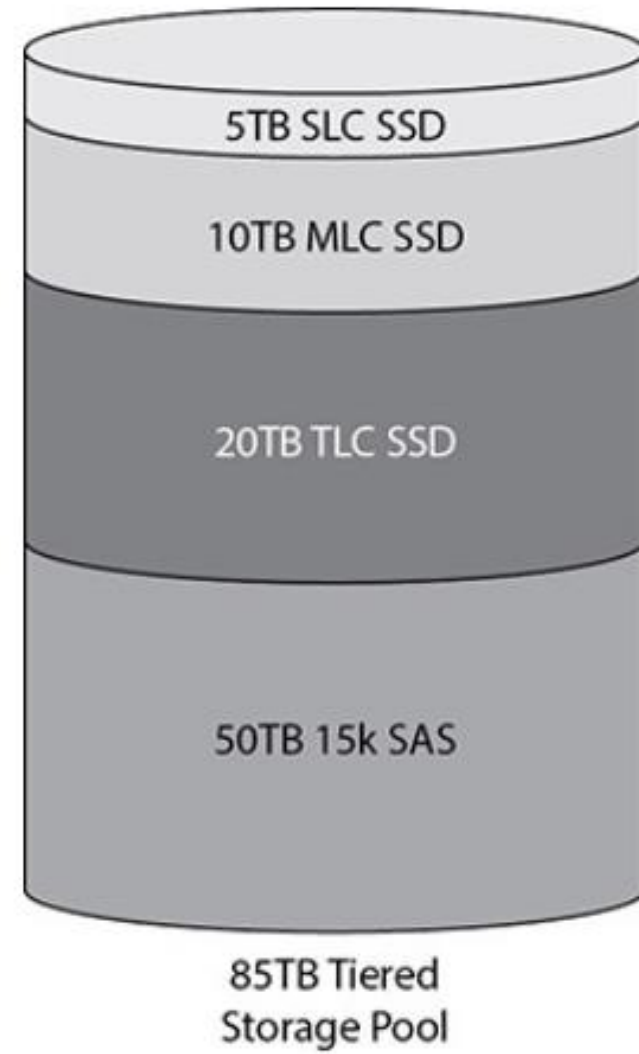


Figure 3-4 Zoning using a Fibre Channel switch

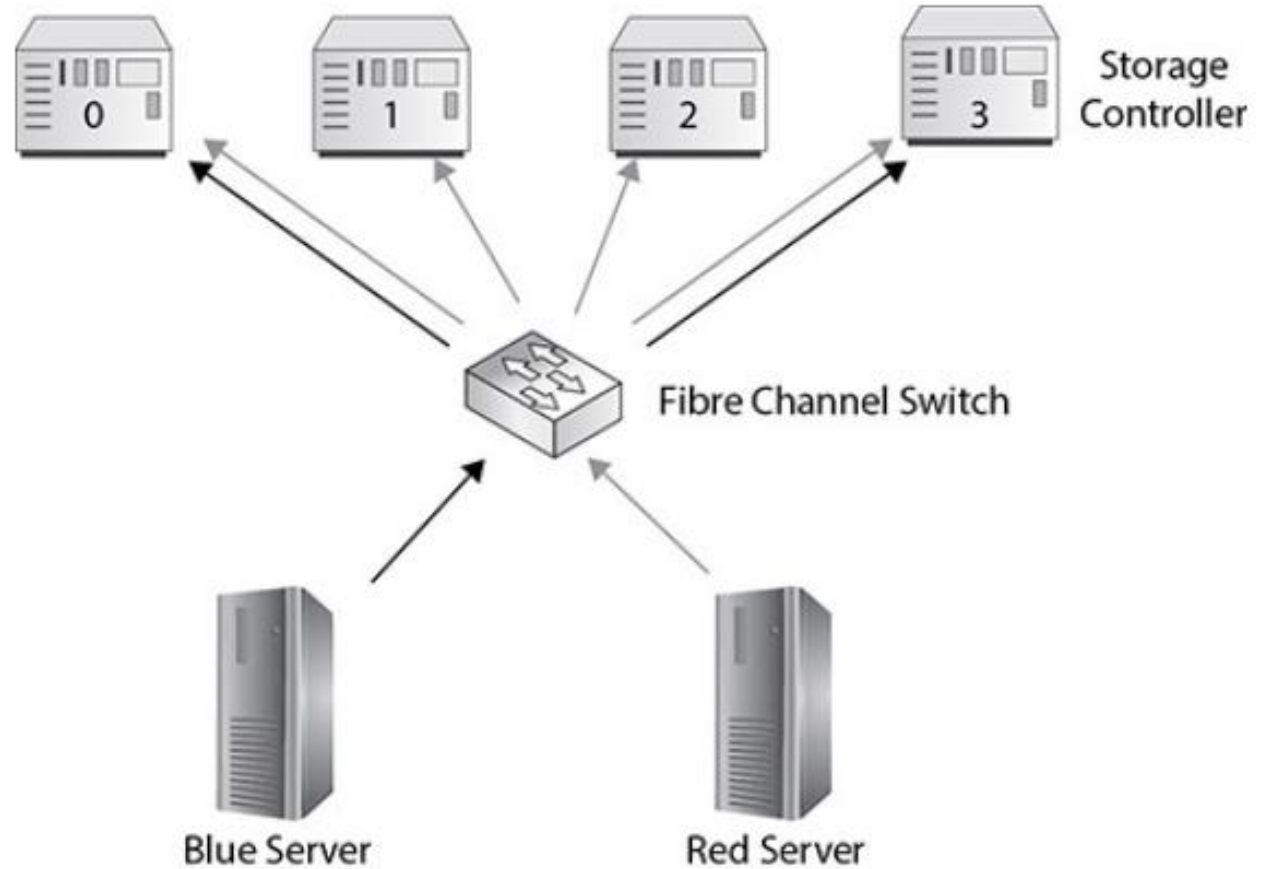


Figure 3-5 LUN masking using the storage controller

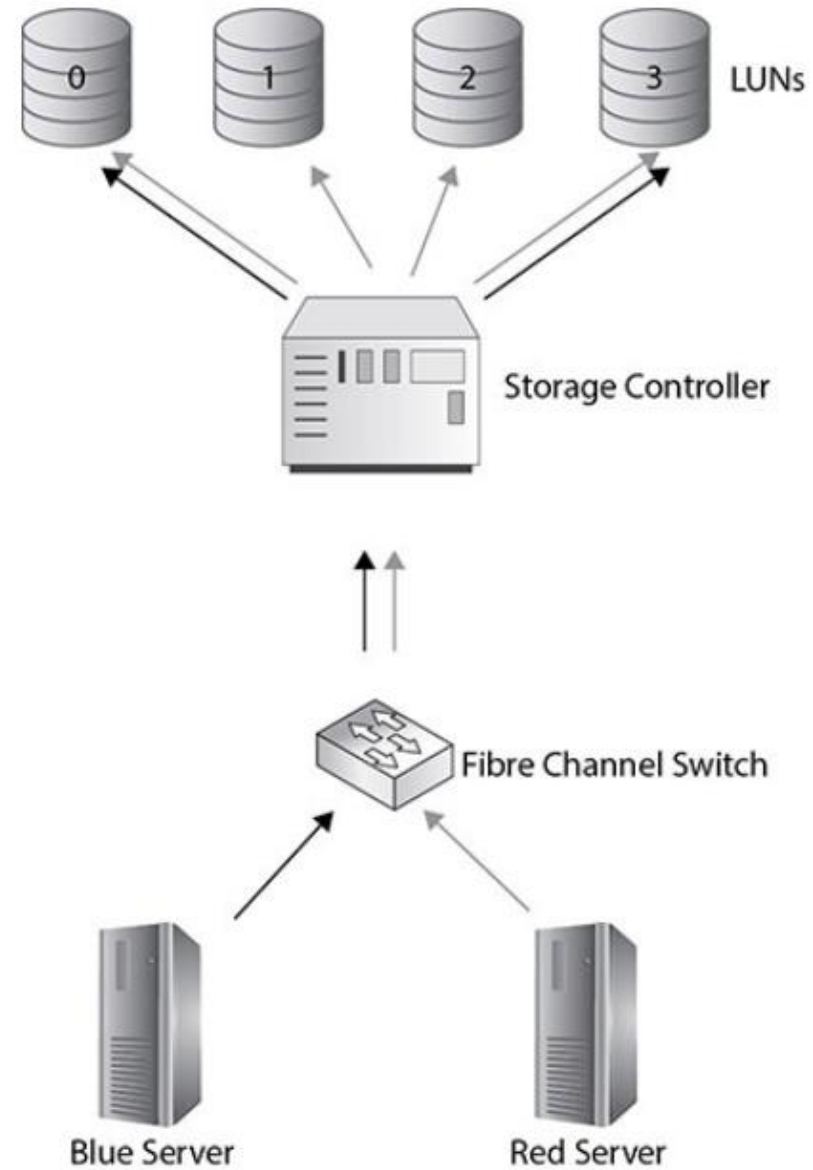


Figure 3.6 Multiregional replication

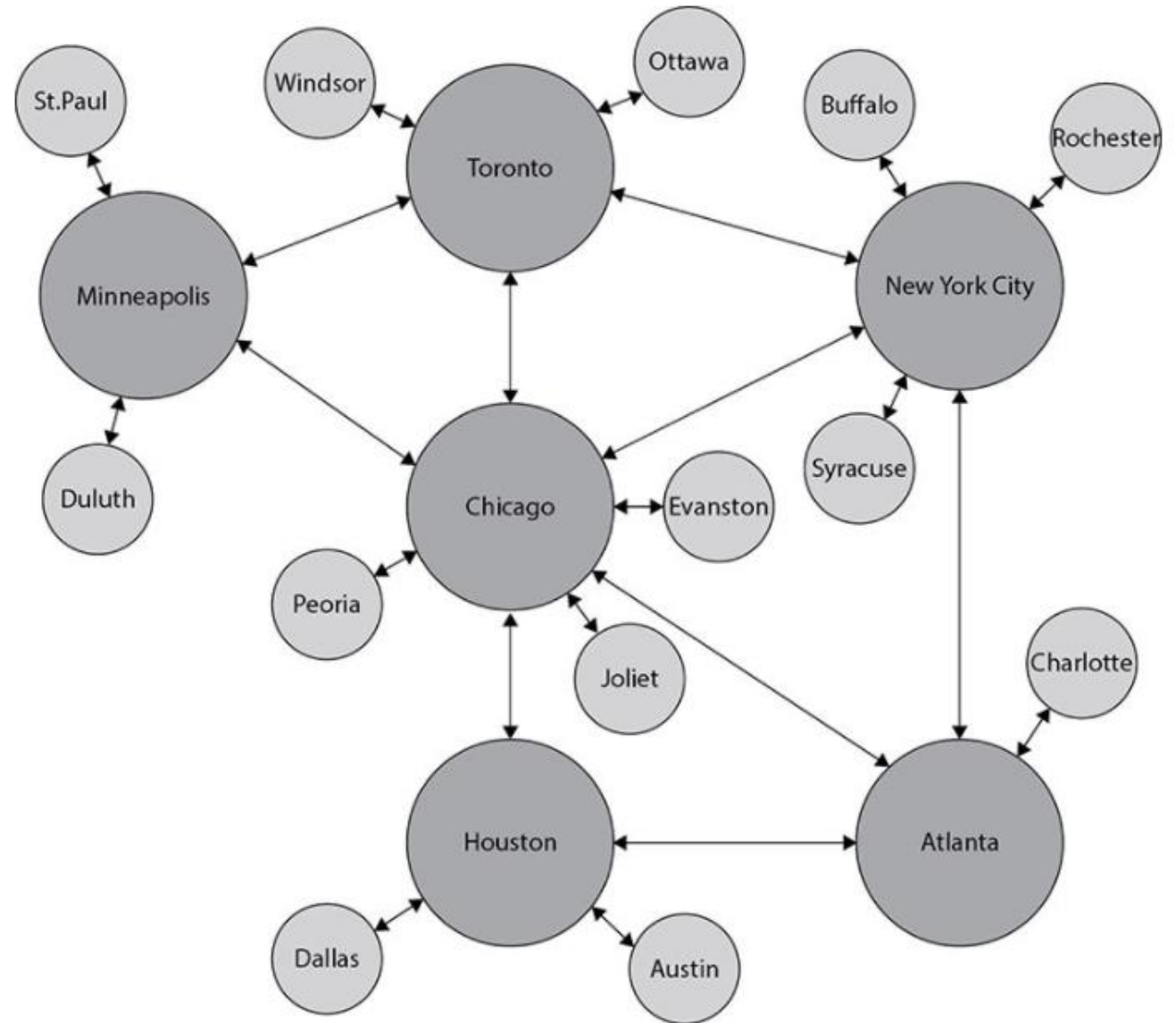
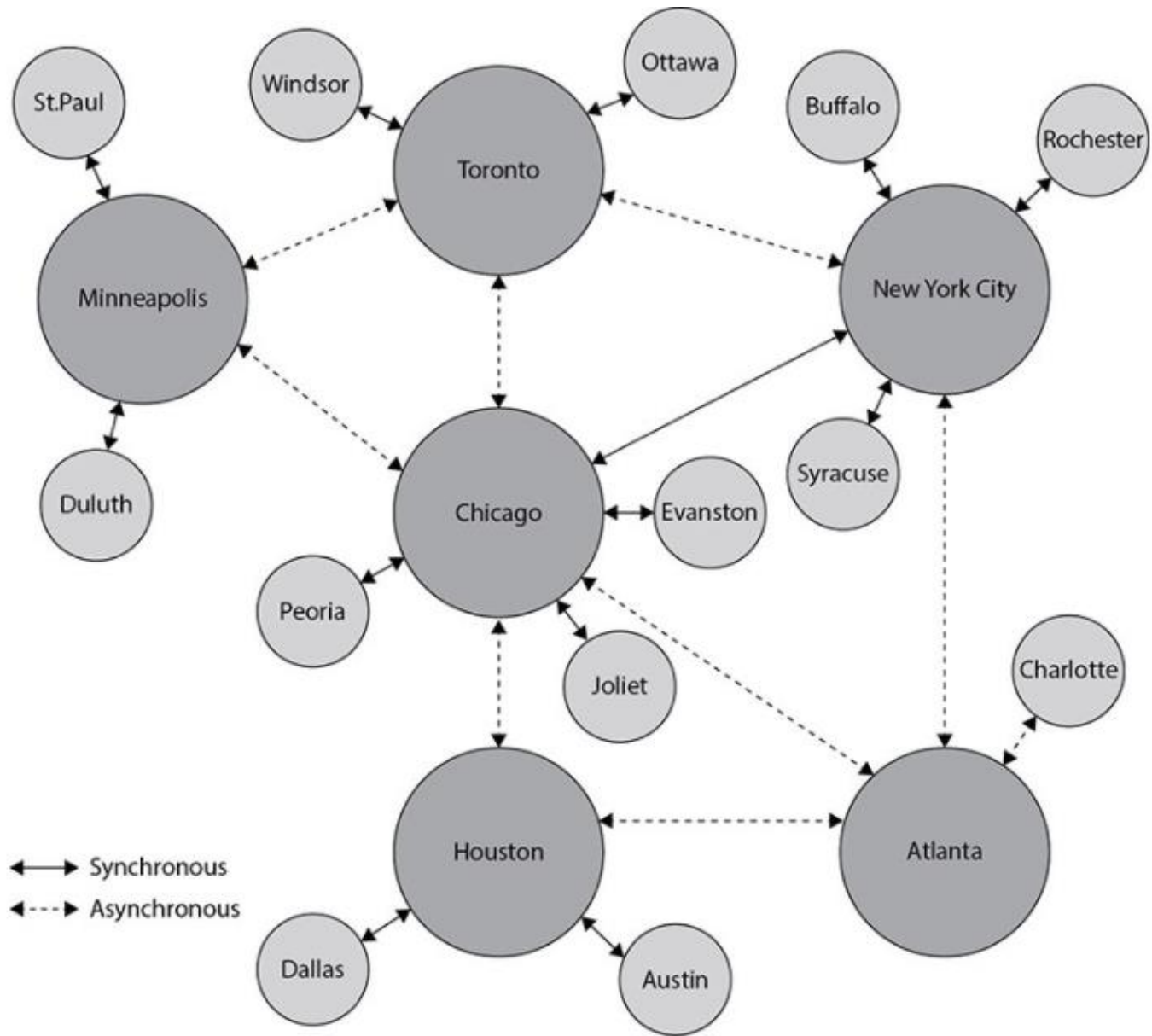




Figure 3-  
7 Synchronous  
and asynchronous  
multiregional  
replication



**1.** Which type of storage system is directly attached to a computer and does not use a storage network between the computer and the storage system?

A. NAS

B. SAN

C. DAS

D. Network share

**1.** Which type of storage system is directly attached to a computer and does not use a storage network between the computer and the storage system?

A. NAS


B. SAN

**C.** DAS

D. Network share



**2.** Which of the following characteristics describe a network attached storage (NAS) deployment?

- A. Requires expensive equipment to support
  - B. Requires specialized skill sets for administrators to support
  - C. Delivers the best performance of any networked storage technologies
  - D. Provides great value by utilizing an existing network infrastructure
- 




2. Which of the following characteristics describe a network attached storage (NAS) deployment?

A. Requires expensive equipment to support

B. Requires specialized skill sets for administrators to support

C. Delivers the best performance of any networked storage technologies

D. Provides great value by utilizing an existing network infrastructure



**3.** Which statement would identify the primary difference between NAS and DAS?

- A. NAS cannot be shared and accessed by multiple computers.
- B. DAS provides fault tolerance.
- C. DAS does not connect to networked storage devices.
- D. NAS uses an HBA and DAS does not.

**3.** Which statement would identify the primary difference between NAS and DAS?

A. NAS cannot be shared and accessed by multiple computers.

B. DAS provides fault tolerance.

**C.** DAS does not connect to networked storage devices.

D. NAS uses an HBA and DAS does not.

4. Which storage type can take advantage of Universal Naming Convention addressable storage?

A. SAN

B. NAS

C. DAS

D. SATA



4. Which storage type can take advantage of Universal Naming Convention addressable storage?

A. SAN

☒ B. NAS

C. DAS

D. SATA

**5.** Which storage type provides block-level storage?

**A.** SAN

**B.** NAS

**C.** DAS

**D.** SATA

**5.** Which storage type provides block-level storage?

**A.** SAN

**B.** NAS

**C.** DAS

**D.** SATA

6. Which of the following connects a server and a SAN and improves performance?

A. Network interface card

**B.** Host bus adapter

C. Ethernet

D. SCSI

**7.** Which of the following protocols allows Fibre Channel to be transmitted over Ethernet?

**A.** HBA

**B.** FCoE

**C.** iSCSI

**D.** SAN

7. Which of the following protocols allows Fibre Channel to be transmitted over Ethernet?

A. HBA

☒ B. FCoE

C. iSCSI

D. SAN

**8.** Which of the following is considered a SAN protocol?

**A.** FCP

**B.** IDE

**C.** SSD

**D.** DTE

8. Which of the following is considered a SAN protocol?

☒ A. FCP

B. IDE

C. SSD

D. DTE



**9.** Which of the following allows you to connect a server to storage devices with speeds of 128 Gbps?

A. Ethernet

B. iSCSI

C. Fibre Channel

D. SAS

9. Which of the following allows you to connect a server to storage devices with speeds of 128 Gbps?

A. Ethernet

B. iSCSI

C. Fibre Channel

D. SAS

**10.** Which of the following uses IP networks that enable servers to access remote disks as if they were locally attached?

A. SAS

B. SATA

C. iSCSI

D. Fibre Channel

**10.** Which of the following uses IP networks that enable servers to access remote disks as if they were locally attached?

A. SAS

B. SATA

**C.** iSCSI

D. Fibre Channel

**11.** Warren is a systems administrator working in a corporate data center, and he has been tasked with hiding storage resources from a server that does not need access to the storage device hosting the storage resources. What can Warren configure on the storage controller to accomplish this task?

- A. Zoning
- B. LUN masking
- C. Port masking
- D. VLANs

**11.** Warren is a systems administrator working in a corporate data center, and he has been tasked with hiding storage resources from a server that does not need access to the storage device hosting the storage resources. What can Warren configure on the storage controller to accomplish this task?

A. Zoning

**B.** LUN masking

C. Port masking

D. VLANs

**12.** Which of the following would increase availability from a virtualization host to a storage device?

- A. Trunking
- B. Multipathing
- C. Link aggregation
- D. VLANs

**12.** Which of the following would increase availability from a virtualization host to a storage device?

A. Trunking

**B.** Multipathing

C. Link aggregation

D. VLANs



**13.** A website administrator is storing a large amount of multimedia objects in binary format for the corporate website. What type of storage object is this considered to be?

A. BLOB

B. Replica

C. Metadata

D. Object ID

13. A website administrator is storing a large amount of multimedia objects in binary format for the corporate website. What type of storage object is this considered to be?

- ☒ A. BLOB
- ☐ B. Replica
- ☐ C. Metadata
- ☐ D. Object ID

**14.** Which of the following allows you to provide security to the data contained in a storage array?

- A. Trunking
- B. LUN masking
- C. LUN provisioning
- D. Multipathing

**14.** Which of the following allows you to provide security to the data contained in a storage array?

A. Trunking

**B.** LUN masking

C. LUN provisioning

D. Multipathing

**15.** Which provisioning model would you use if data is added quickly and often? The solution must ensure consistent performance.

- A. Thin provisioning
- B. Thick provisioning
- C. Overprovisioning
- D. Encryption

**15.** Which provisioning model would you use if data is added quickly and often? The solution must ensure consistent performance.

A. Thin provisioning

☒ B. Thick provisioning

C. Overprovisioning

D. Encryption

**16.** Which HA solution involves multiple servers that each service requests concurrently but can assume the load of one member if that member fails?

- A. Active-passive
- B. Active-active
- C. Passive-passive
- D. Passive-active

**16.** Which HA solution involves multiple servers that each service requests concurrently but can assume the load of one member if that member fails?

A. Active-passive

**B** Active-active

C. Passive-passive

D. Passive-active



**17.** Which of the following are requirements for adequate application performance when using synchronous replication? (Choose two.)

- A.** Object storage
- B.** Low latency
- C.** Multipathing
- D.** High-speed links

17. Which of the following are requirements for adequate application performance when using synchronous replication? (Choose two.)

A. Object storage

☒ B. Low latency

☒ C. Multipathing

D. High-speed links

# CompTIA Cloud+ Certification All-in-One Exam Guide (Exam CV0-003)

Write the [first review](#)

By [Eric A. Vanderburg](#)



**TIME TO COMPLETE:**

20h 27m

**TOPICS:**

[CSA+ \(CompTIA Cyber Security Analyst\)](#)

**PUBLISHED BY:**

[McGraw-Hill](#)

**PUBLICATION DATE:**

July 2021

**PRINT LENGTH:**

560 pages